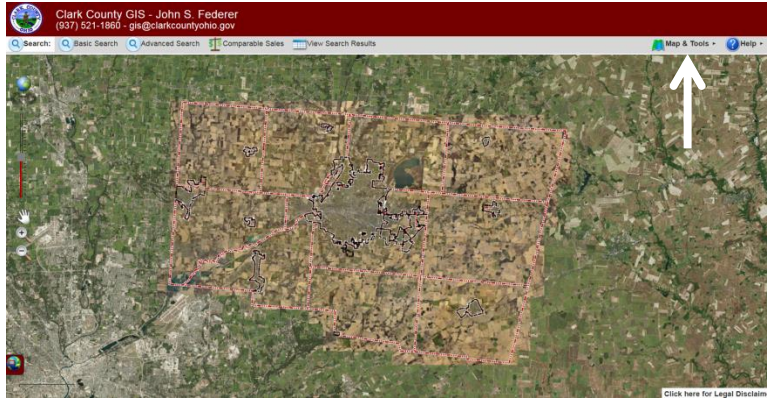
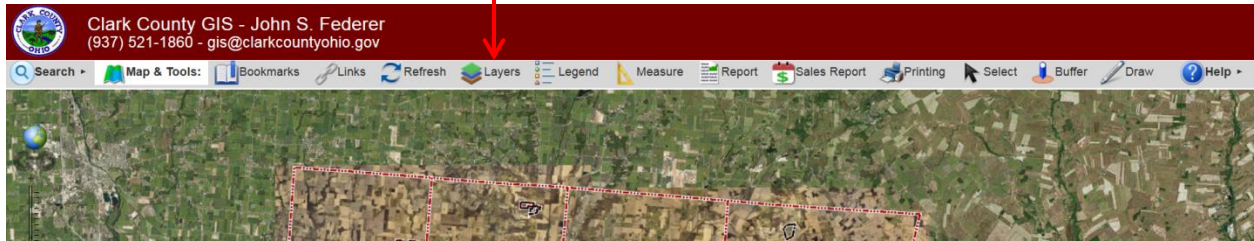


4-13-2018; Development Contacts List



County Auditor, GIS main page  
[www.gis.clarkcountyauditor.org](http://www.gis.clarkcountyauditor.org)  
click on the "Map & Tools" tab

Click on the "Layers" tab



Expand the "Base" option by clicking on the arrow to the right of the Base. Then click the box next to "Development Contacts List".

